



Stay with Us



glamping blocks

If you're interested in hosting a group of guests, we offer lodging blocks at a reduced rate. We'll help you make a lodging plan and provide property info to share with your guests. Note, weekday lodging blocks are also available, just ask.

30 guests for \$2,850

Available spaces include the Giant Lotus Mahal, Serenity Yurt, and seven glamping tents (five 10' and two 13'). Plus, 20 standard cots with bedding

50 guests for \$4,850

Available spaces include the Giant Lotus Mahal, Serenity Yurt, and ten glamping tents (three 16', five 10' and two 13'). Plus, 30 standard cots with bedding.

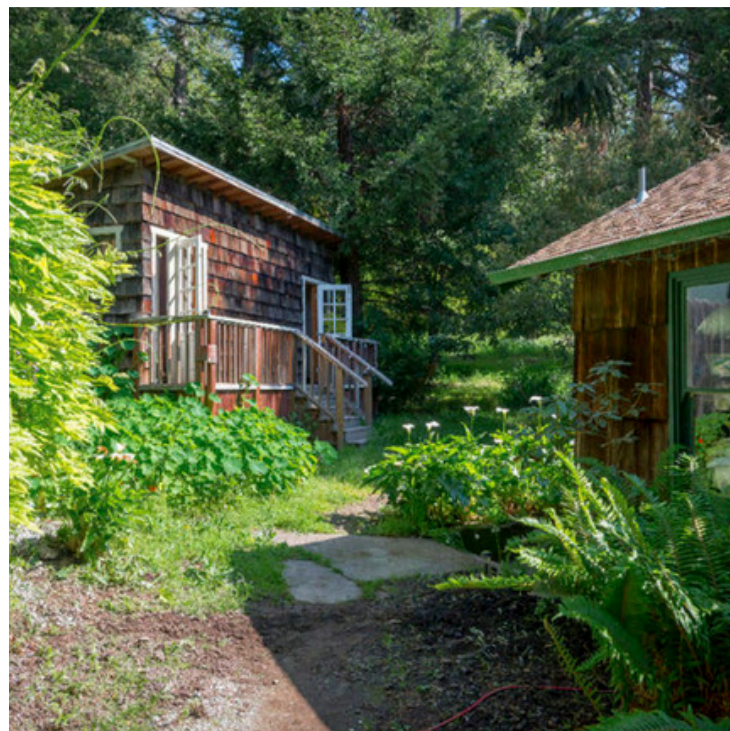
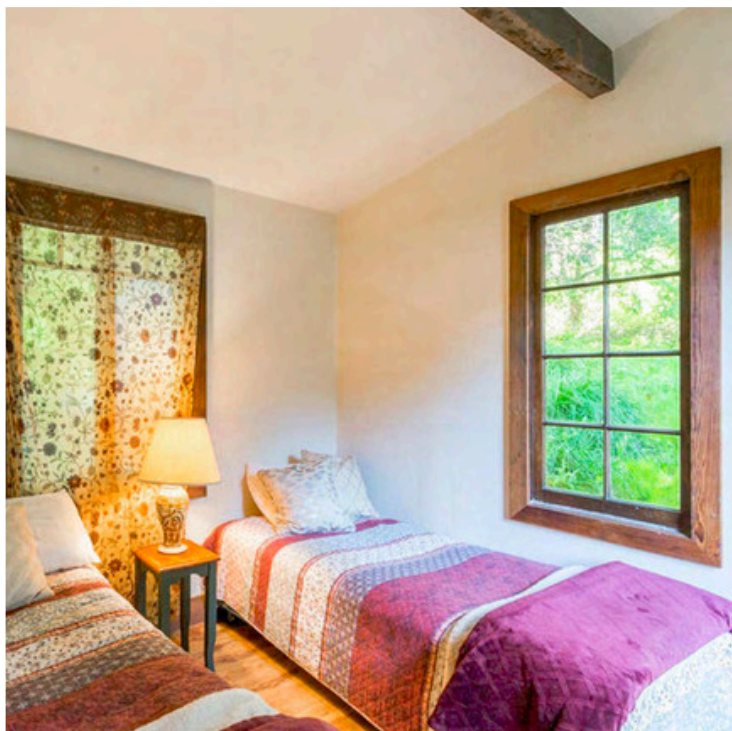
Majestic Tent Cabin

Electrified boho chic safari tent cabin with antique king bed, full-size fold-out futon, electric heater, dining table/kitchenette, enclosed bathroom with shower, and beautiful wraparound deck.



Nasturtium Cabin Rooms 1 & 2

Each two-room section of this cedar-clad charmer sleeps up to three in a double and twin. Plus, private porch entrance, gorgeous light, and thoughtful decor. Outdoor showers and baths nearby.



Serenity Yurt

This newly constructed 27-foot beauty is tucked in a private, pretty clearing. It features a cedar floor, gas stove, skylight and sconces, accessory furniture, fridge and microwave. Ideal for wedding party lodging, plus “getting ready” and gathering space. Modern bath and outdoor shower nearby.



Canvas Bell Tents

These small, medium, and large canvas bells are perfect in their organic, free-spirited way. Small 10' tents are suitable for a couple and larger 13' and 16' tents are ideal for groups of friends and families, with room to spread out and get ready. Outdoor showers plus both modern and portable toilets nearby.



pictured: 13' Bell Tent with queen camp pad



pictured: 10' Bell Tent with twin cot



Giant Lotus Mahal

Our gorgeous Australian Lotus Mahal Tent is situated by our Creekside meadow and offers flexible configuration with 700+ square feet of space. Each tent includes a center rug, three nightstands, and six solar flashlights.



Retro Cub Teardrop Trailer

Our totally restored 1947 vintage teardrop sleeps up to two overnight. It's well insulated with cedar trimmed walls, electrified, and is furnished with a (smallish) double bed, camp stove, non-potable sink, and cooler.



“MC” Our Modern Camper

Our neat and tidy Starcraft sleeps up to two overnight. It's dry-docked (no water or septic) but has heat and a/c, electricity, a cozy bed, and lots of space to spread out and get ready.



glamping rates

Mon-Thurs/Fri & Sun/Sat

Nightly RATES vary by day of week. Certain accommodations are rented on a per person basis with minimum occupancy. Others are rented by unit. On every reservation, 10% occupancy tax is additional. Book two nights or more and take 20% off the total stay.

Shared Spaces (per person pricing)

Serenity Yurt (6-10 guests) \$95/\$110/\$125pp

10' Canvas Bell Tent private \$150/\$165/\$195

13' Canvas Bell Tent for two guests \$250/\$265/\$295

10' Canvas Bell Tent shared (2-3 guests) \$70/\$80/\$115pp

13' Canvas Bell Tent shared (3-4 guests) \$70/\$80/\$115pp

16' Canvas Bell Tent shared (4-5 guests) \$70/\$80/\$115pp

Giant Lotus Mahal Tent (6-15 guests) \$70/\$80/\$115

BYOT (Bring Your Own Tent) \$55/\$65/\$75

Unique Spaces (unit pricing)

Vintage Cub Teardrop Trailer \$140/\$165/\$195

Modern Camper \$160/\$190/\$225

Majestic Tent Cabin \$235/\$275/\$325

Nasturtium Wood Cabin #1 (up to 3) \$215/\$250/\$295

Nasturtium Wood Cabin #2 (up to 3) \$215/\$250/\$295





THE LODGE

Available as an add-on for summer and fall 2026, our historic lodge has undergone a beautiful renovation. It offers the historic footprint, with common spaces for work and gathering, and accommodations for up to twenty guests overnight.

Common Areas

Fully-Equipped Kitchen
Dining Room with Seating for Ten
Living Room with flexible seating, Fireplace

Add on from \$1,000 to \$1,600 per day,
plus 20% service



Bedrooms

Five first floor guest rooms, each with a queen bed and additional twins or bunk beds. Writing Desk. Add them a la carte or invite your guests to book directly. Rates are double occupancy. Add a twin or bunk for a fee.

Mon-Thurs \$250 +tax

Sun & Fri \$295 +tax

Saturday \$350 +tax

Add a twin or bunk \$115/\$125/\$135

Rent the Entire Space

Reserve the common spaces and bedrooms for ten (10) overnight guests at an early bird discounted rate, plus 10% tax, 10% service. Add twins and bunks a la carte.

Mon-Thurs: \$1,900

Sun & Fri: \$2,400

Saturday: \$3,000



local ACTIVITIES

OUTDOOR ADVENTURES:

Pigeon Point - California's most photographed Lighthouse

Bean Hollow Pebble Beach -marvelous, polished stone shore, tidal pools, birding

Aña Nuevo - walking trails, permitted access to beach to see the seals!

Butano State Park & Marshlands -limited access trails & wetland, birding and wildlife opportunities

Pescadero Beach - gorgeous, mile-long sandy stretch right on Highway One, perfect for strolling, playing, surfing, etc.

PESCADERO PROPER:

Downtown Local - California coffee, cool vibes

Arcangeli's - fourth generation family market, famous artichoke bread, fabulous deli and to-go foods

Loma Mar Store - organic eats, live music

Madrone Arts - new art co-op and gallery

San Gregorio Store - historic old west general store, eatery, live music

Stage Road Shops (Wellness Shed, Slow Coast, Luna Sea, Sunshine, etc.

RANCHES & RADIO...

Harley Farm - baby goats, farmstead cheeses, tours

Pie Ranch - food hub, farmstand

KPDO 89.3 FM - community sponsored, listener supported

